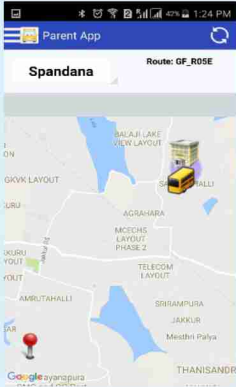


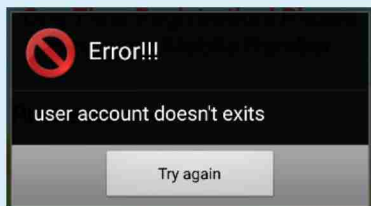
MAP SCREEN :



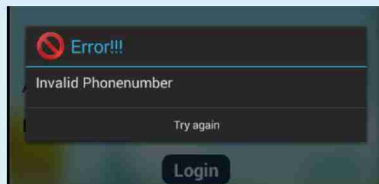
You can click on refresh button (icon provided at the top right) for updated route.

In case of more than one child you can track & see the route by selecting the respective child from the drop-down provided at the left. A text will be displayed on the top of the map as soon as child reaches to drop point like "Trip has completed".

Please enter the mobile number which is given in school registration. Otherwise, you will get an error alert as shown below.



In case of wrong details application will pop-up an alert "invalid mobile number".



PREVA PRODUCTS

TrackWISE

CCTV + SD Card + Wi-Fi for low cost School Bus security solution.

GPS + CCTV + Mobile DVR based high end Security solution for School Bus and Employee transportation.

AssetWISE

RFID/NFC based Campus presence and attendance solution for School/College Campus and Enterprises.

LibWISE

RFID based Library automation including automatic check-in/check-out, quick inventory, theft tracking and analytics.

Preva IOT Centre of Excellence for Colleges:

Standardized IOT lab set up in colleges along with 5-days of Faculty Development Program.

in IOT and 2 weeks of comprehensive Student Development Program in IOT with mini-project.



Preva Systems Pvt Ltd,

No.4, Sunrise Tower, 2nd Floor, 6th Block, 2nd Stage,
NagarabHAVI Outer Ring Road, Bangalore. India.

Mobile: 8861277001

Email: support@prevasystems.com



TrackWISE

**"Track your child
at your finger tip"**

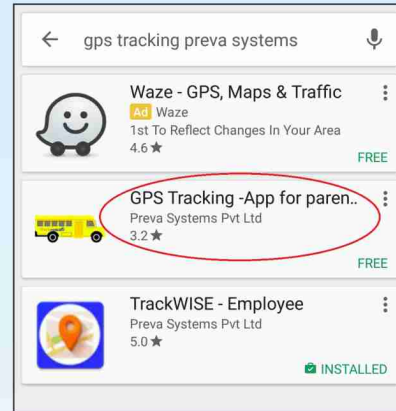


Android app available on Google Play Store 'GPS TRACKING PREVA'

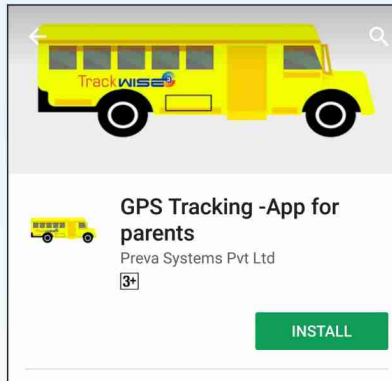
1. To use this application you need to rise a request to your respective school transport administration with your mobile number and IMEI number.
2. For change in mobile number or smart phone please contact Preva Systems Support team to update your mobile number or IMEI number to continue the tracking service.

STEPS TO DOWNLOAD

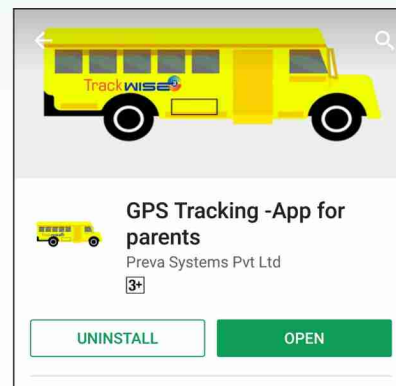
1. Type GPS Tracking Preva in the search field



1



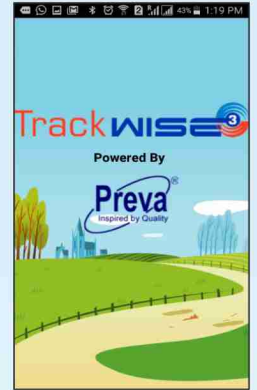
2



3

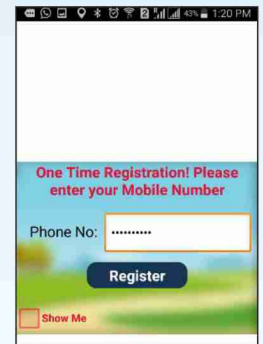
📍 SPLASH SCREEN :

As soon as you open the application splash screen will open and stay for 2 seconds and automatically it will take you to login screen.



📍 ONE TIME REGISTRATION :

Please enter the mobile number that is registered in school.



📍 LOGIN SCREEN :

Once the application is registered, enter the school name (as provided in Trip Msg/Sms alerts) in Account ID and registered mobile number as phone number to login.

